

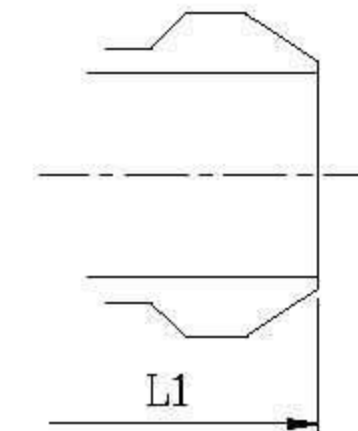
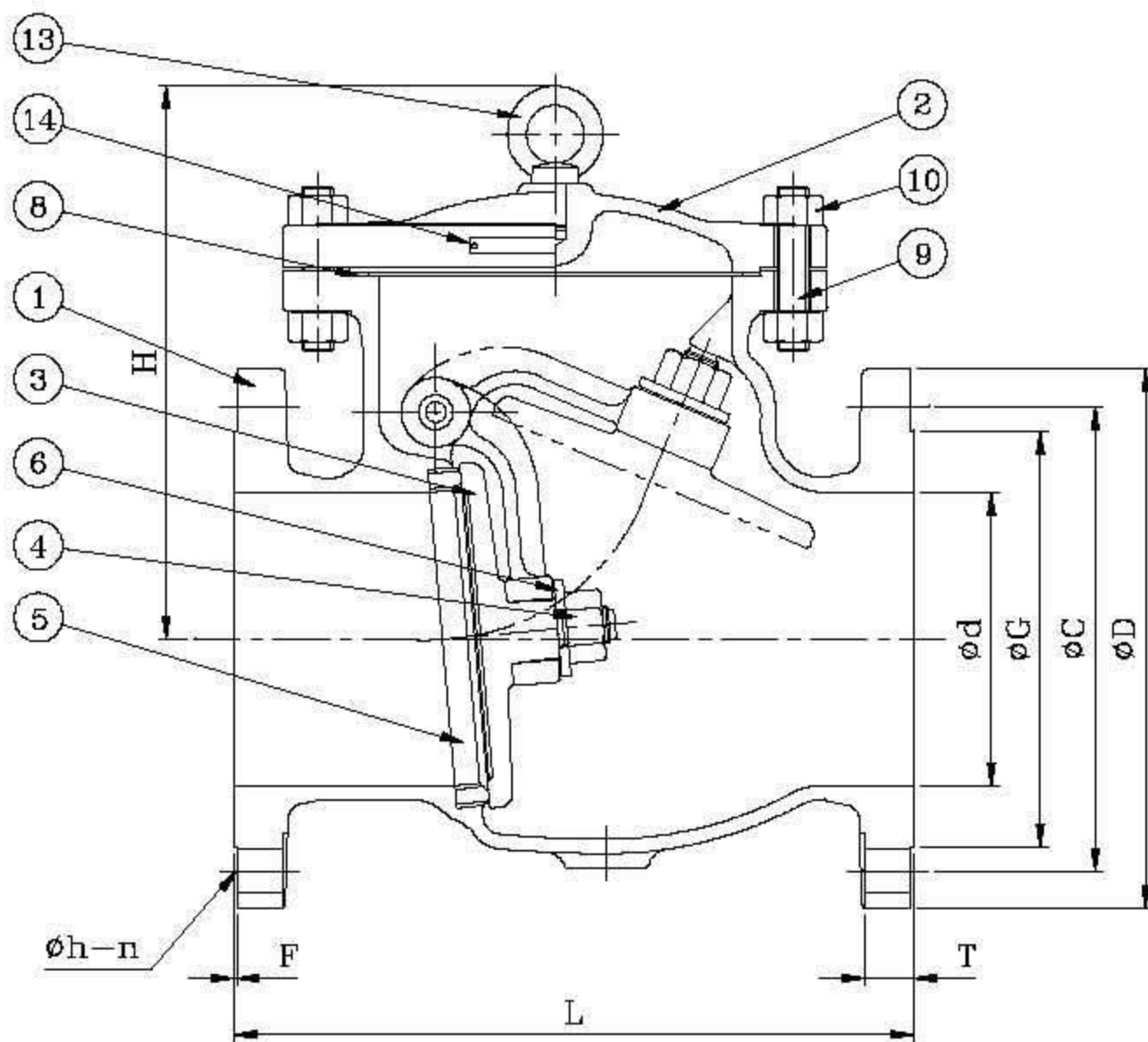
# CAST STEEL CHECK VALVE – ANSI CLASS 150

## DESIGN DESCRIPTION:

- BOLTED COVER
- SWING TYPE
- FOR HORIZONTAL OR VERTICAL LINES
- RENEWABLE SEAT RING
- FLANGED ENDS
- BUTTWELDING ENDS

## APPLICABLE STANDARDS:

- STEEL VALVES, ANSI B16.34
- FACE TO FACE, ANSI B16.10
- END FLANGES, ANSI B16.5
- BUTTWELDING ENDS, ANSI B16.25
- INSPECTION AND TEST, API 598



Buttwelding Ends

## PARTS AND MATERIAL (ASTM)

NO.	PARTS NAME	MATERIALS		
		WCB	WC6	LCB
1	Body	A216-WCB	A217-WC6	A352-LCB
2	Cover	A216-WCB	A217-WC6	A352-LCB
3	Disc	A216-WCB+H/F 410	A217-WC6+H/F 410	A352-LCB+H/F 410
4	Disc Nut	A194-8		
5	Seat Ring	A105+H/F STL#6	A217-WC6+H/F STL#6	A350-LF2+H/F STL#6
6	Disc Washer	A276-304		
7	Swing Arm	A216-WCB	A217-WC6	A352-LCB
8	Gasket	Grafoil+316 Sheet		
9	Cover Bolt	A193-B7	A193-B7	A193-B7M
10	Cover Bolt Nut	A194-2H	A194-2H	A194-2HM
11	Plug	A276-410		
12	Hinge Pin	A276-410		
13	Eye Bolt	A36+Zn Plate		
14	Name Plate	A666-304		

OTHER MATERIALS ARE AVAILABLE UPON REQUEST.

## TEST PRESSURE TO API 598

PSIG

SHELL TEST (water)	SEAT TEST (water)	SEAT TEST (air)
450 ( 32 kg/cm <sup>2</sup> )	314 ( 22 kg/cm <sup>2</sup> )	80 ( 6 kg/cm <sup>2</sup> )

## DIMENSION TABLE:

DN	NPS	Ød	L & L1	H	T	F	ØD	ØC	ØG	Øh	n	WT.(Kg)
50	2	50.8	203	170	15.8	1.6	152.4	120.7	92.0	19.0	4	16
65	2 1/2	63.5	216	180	17.5	1.6	177.8	139.7	104.7	19.0	4	25
80	3	76.2	241	195	19.1	1.6	190.5	152.4	127.0	19.0	4	29
100	4	101.6	292	215	23.9	1.6	228.6	190.5	157.2	19.0	8	41
125	5	127.0	330.2	279	24.0	1.6	254.0	215.9	186.0	22.4	8	52
150	6	152.4	356	270	25.4	1.6	279.4	241.3	215.9	22.3	8	76
200	8	203.2	495	315	28.5	1.6	342.9	298.5	269.8	22.3	8	126
250	10	254.0	622	360	30.3	1.6	406.4	362.0	323.9	25.4	12	202
300	12	304.8	699	400	31.8	1.6	482.6	431.8	381.0	25.4	12	306
350	14	336.6	787	460	35.1	1.6	533.4	476.3	412.8	28.5	12	420
400	16	387.4	914	490	36.6	1.6	596.9	539.8	469.9	28.5	16	550
450	18	438.2	978	560	39.7	1.6	635.0	577.9	533.4	31.8	16	760
500	20	489.0	978	620	43.0	1.6	698.5	635.0	584.2	31.8	20	820
550	22	540.0	1067	726	46.0	1.6	749.3	692.2	641.4	35.0	20	1000
600	24	590.6	1295	700	47.8	1.6	812.8	749.3	692.2	35.0	20	1300